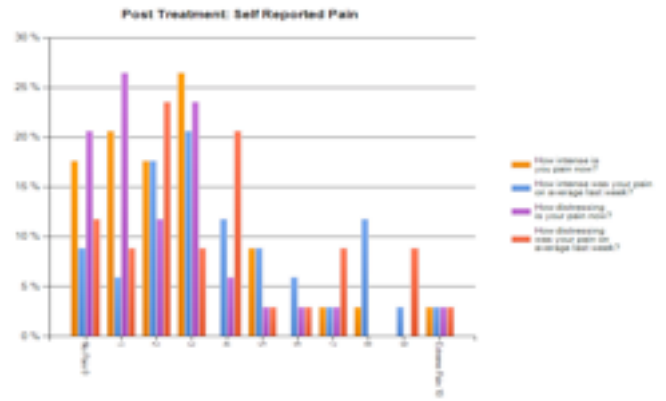
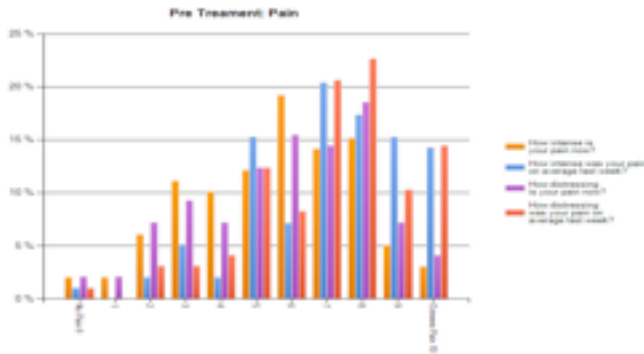


GP NEWSLETTER

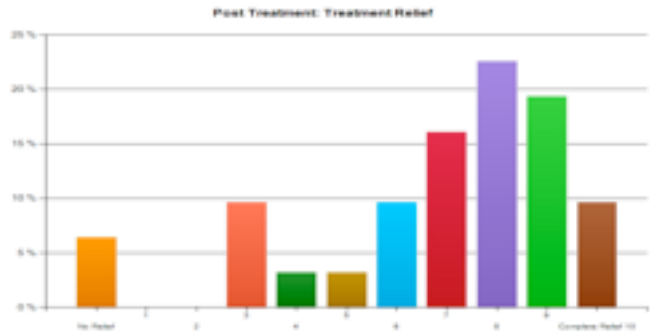
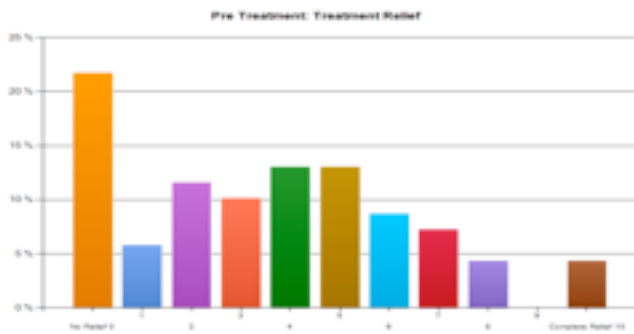
LBP Pathway: Graphical supplement

These are the results to date, in graphical form, of the LBP Pilot Study (Pathway). It's not easy to extract helpful data from them, so perhaps the best approach is to simply note the change of 'peaks' from right to left (or vice versa). I've made some brief notes beneath the bottom two, too.

Pain/distress before and after treatment:

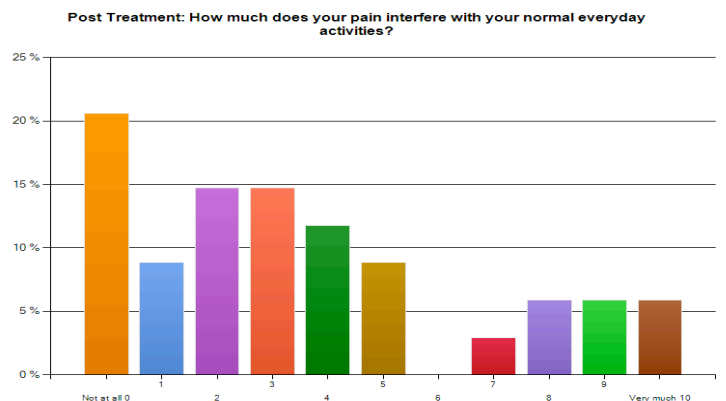
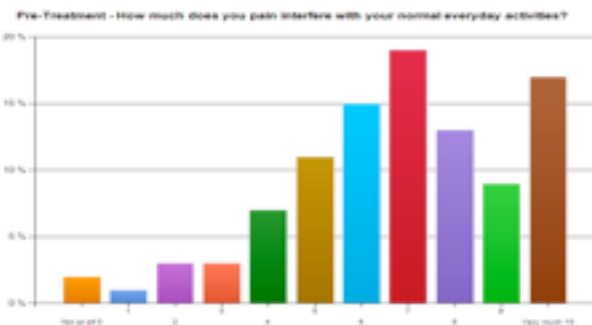


Relief from pain before and after treatment:



Prior to manual therapy, 40% of patients reported 0-2/10 relief from pain and only 8% 8-10/10: after treatment, completely reversed!

Pain interference with activities before and after treatment:



Before manual therapy, 72% of patients reported pain interfering with ADLs at 6-10/10; afterwards, this dropped right down to 21%

AJ Norman DC FCC
 King's Lynn Chiropractic Clinic
 John Kennedy Road
 King's Lynn
 NORFOLK PE30 2AA

www.lynnchiropractic.co.uk
 Tel. 01553 772512
 Fax. 01553 775546